

LAZORD

— BY LAPIS —



LAZORD  
— BY LAPIS —

WHERE LUXURY MEETS  
*Convenience*



## ■ Dubai: A City Beyond Imagination

Dubai, the shining star of the Middle East, turns dreams into reality. With the majestic Burj Khalifa at its heart and visionary creations like the Palm Jumeirah, this city offers a lifestyle that's as dazzling as its skyline.



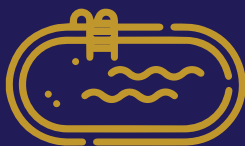


Experience Unparalleled Comfort at LAZORD,  
Dubai's Most Coveted Address.



## Comfort and Leisure

Lazord offers an exceptional range of comfort and leisure amenities, catering to the whole family.



Private Swimming Pool Apartments



Waterfall feature



Outdoor Cinema



Luxurious and large leisure pool deck & Jacuzzi



Concierge Services



Splash pool for kids



Kids Play Area



Billiards Room



Jogging Track



outdoor gym



Indoor gym



Dancing Fountains



Valet Parking



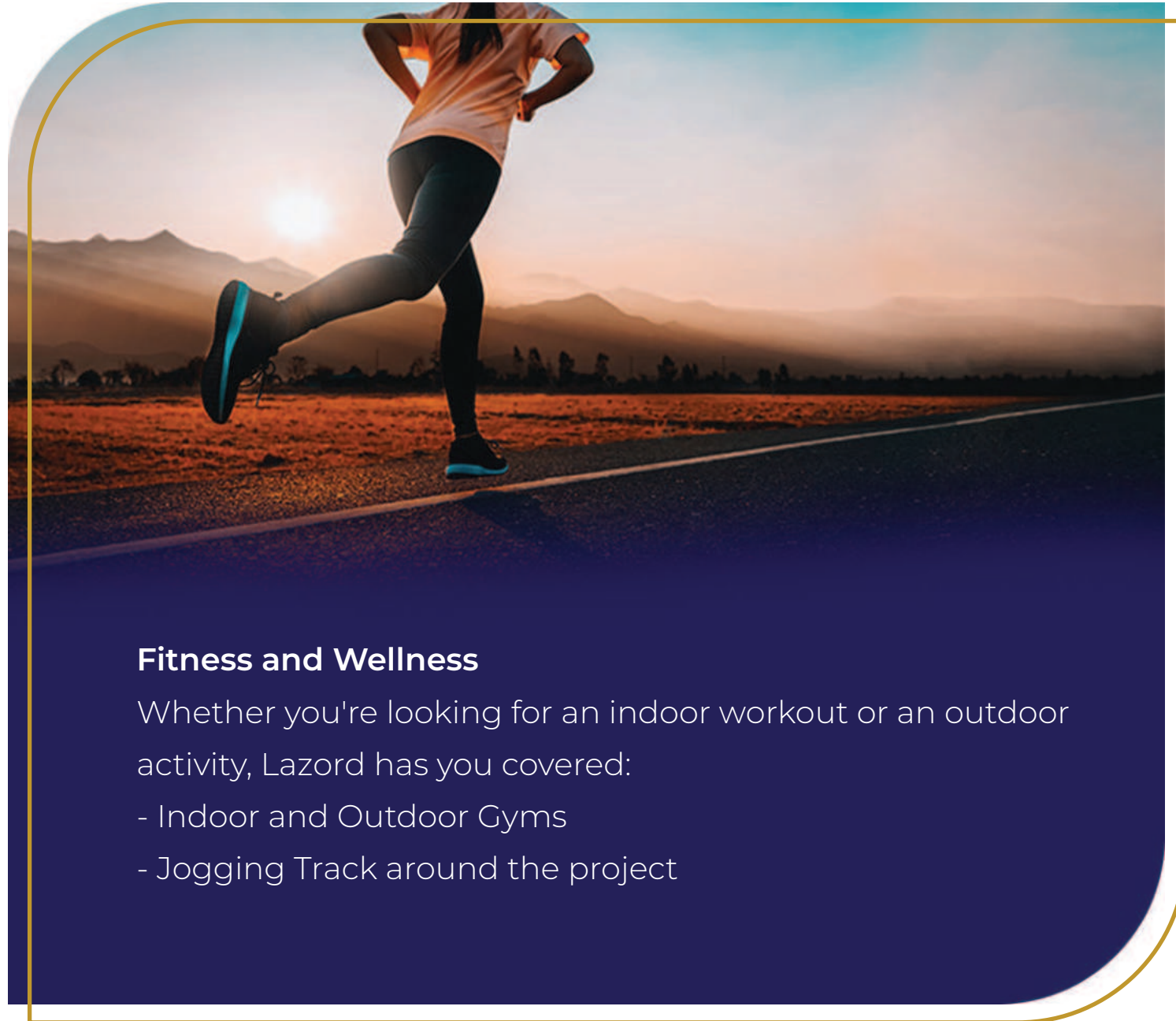
Steam and Sauna



LAZORD: Redefining Urban Luxury with Proximity to Dubai's Best Attractions.







## **Fitness and Wellness**

Whether you're looking for an indoor workout or an outdoor activity, Lazord has you covered:

- Indoor and Outdoor Gyms
- Jogging Track around the project





Lazord offers an exceptional range of comfort and leisure amenities, catering to the whole family





## Green Spaces and Social Gatherings

Enjoy relaxing times in beautiful green areas and social gatheringspots:

- Beautiful Green Gardens
- Barbecue Area
- Air-Conditioned Family Lounges





Whether you're looking for an indoor workout or an outdoor activity, Lazord has you covered

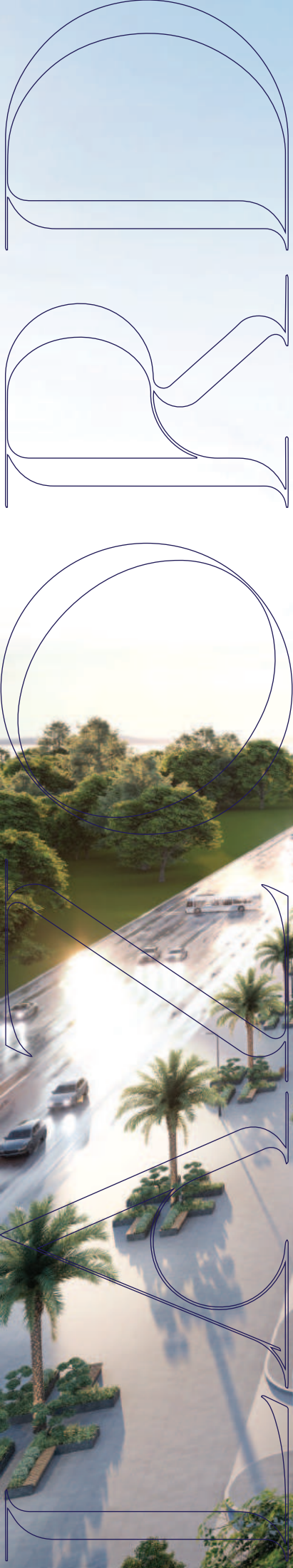


## Strategically Located in the 20-Minute Zone

**LAZORD** stands out with its strategic location, placing you just 20 minutes away from Dubai's major landmarks, making it the perfect choice for luxurious and convenient living:

- 20 minutes to Burj Khalifa and Dubai Mall
- 20 minutes to Dubai Airport
- 20 minutes to Palm Jumeirah
- 20 minutes to Marina
- 5 minutes to Global Village





LAZORD: Your Gateway to Dubai's Luxury Living,  
Surrounded by World-Class Amenities.





LAZORD:  
A Perfect Blend of Elegance  
and Accessibility in the Heart of Dubai.



Elevate Your Lifestyle at LAZORD:  
A 20- Minute Drive to Dubai's Iconic Landmarks.







Experience Premier Living at LAZORD,  
Where Every Corner of Dubai is Just 20 Minutes Away.



DROR  
FOR  
Z



## Exclusive Services

Never worry about parking the car;  
we've got all your needs covered with our  
VALET PARKING service.

A  
L



LAZORD

---

BY LAPIS

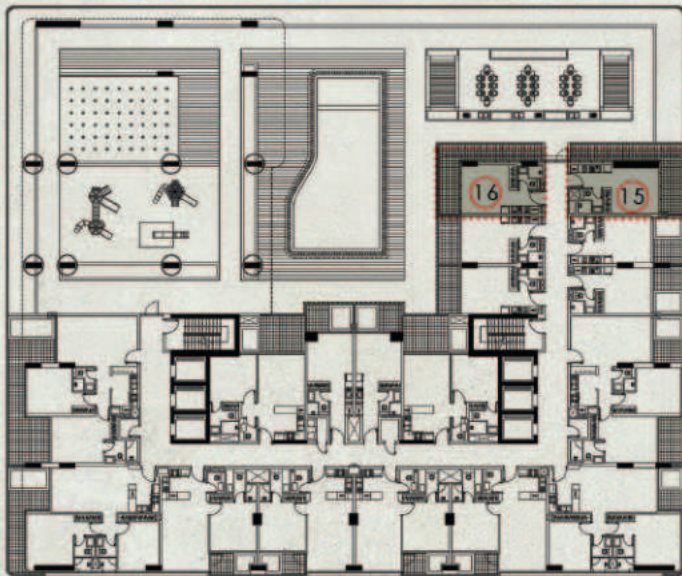
Floor Plans

---





## LAPIS PROPERTIES STUDIO WITH TERRACE



FIRST FLOOR  
2 TYPICAL UNITS

TYPE 2  
AREA - 49.69 SQM.(534 SQFT.)

NOTE : NORTH DIRECTION IS AS PER THE KEY PLAN

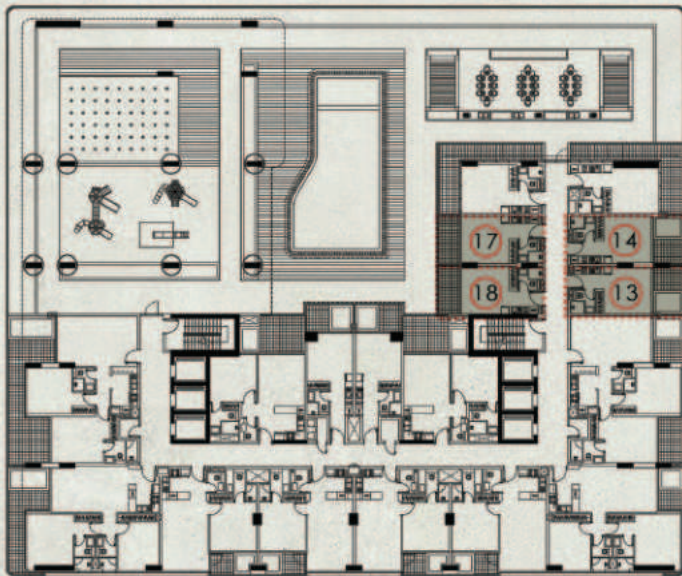


LAZORD  
BY LAPIS





## LAPIS PROPERTIES STUDIO WITH POOL



FIRST FLOOR  
4 TYPICAL UNITS

TYPE 1  
AREA - 35.57 SQM.(382 SQFT.)

NOTE : NORTH DIRECTION IS AS PER THE KEY PLAN



LAZORD  
BY LAPIS





# LAPIS PROPERTIES

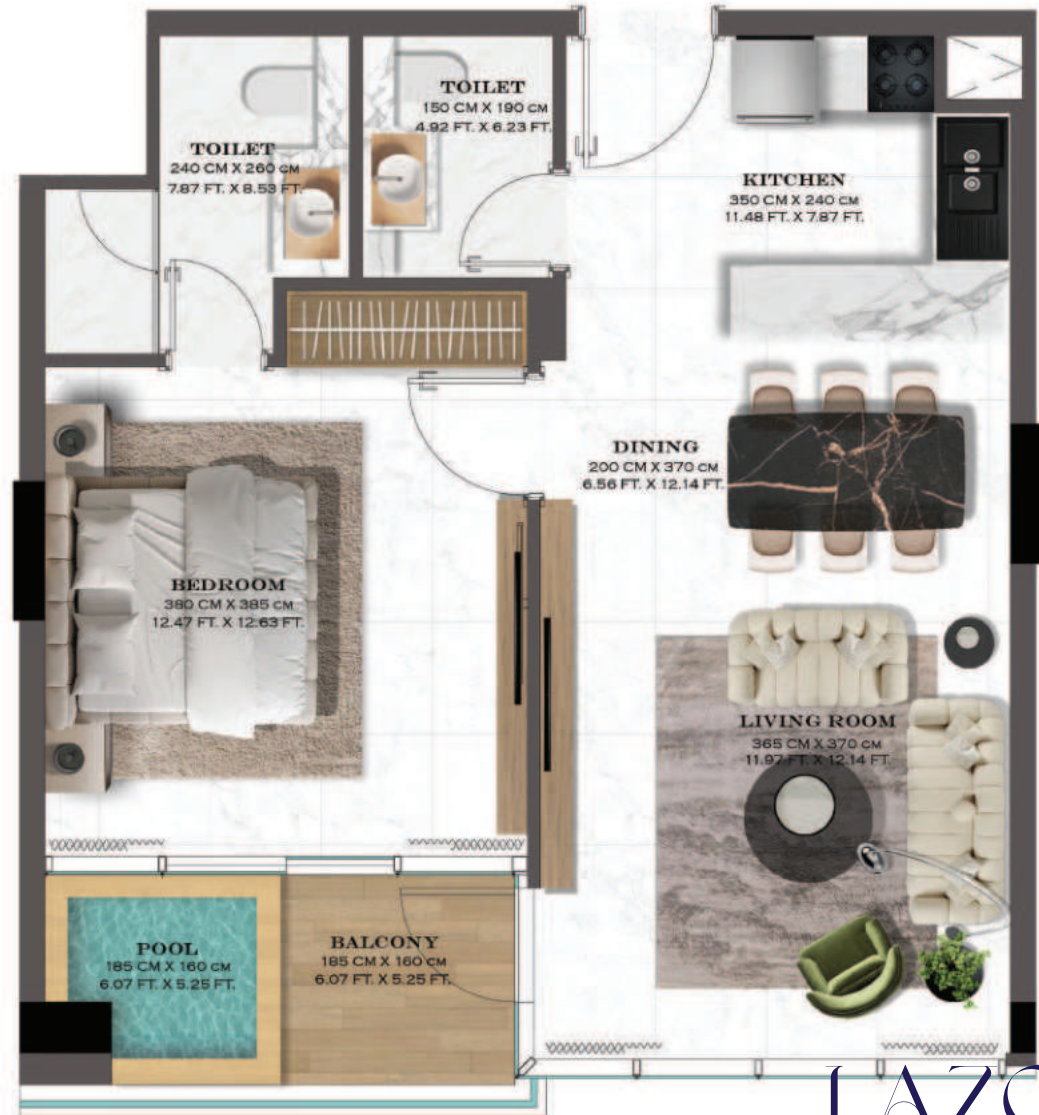
## 1 BHK WITH POOL



FIRST FLOOR  
4 TYPICAL UNITS

TYPE 1  
AREA - 62.46 SQM.(672 SQFT.)

NOTE : NORTH DIRECTION IS AS PER THE KEY PLAN



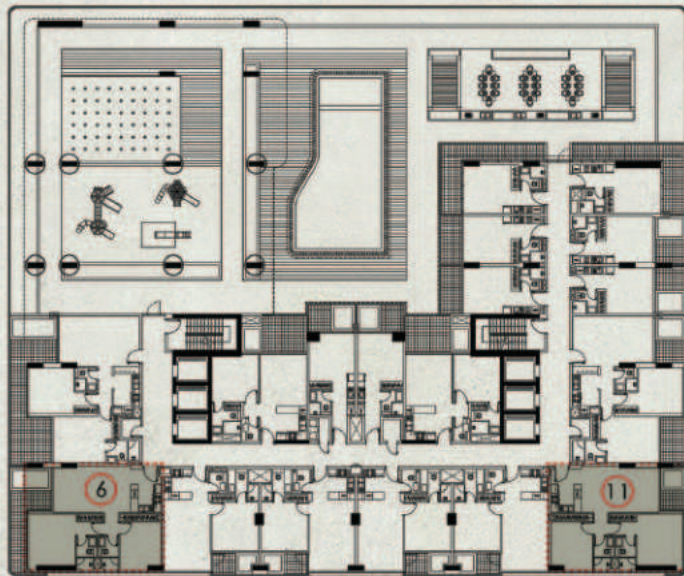
LAZORD  
BY LAPIS





## LAPIS PROPERTIES

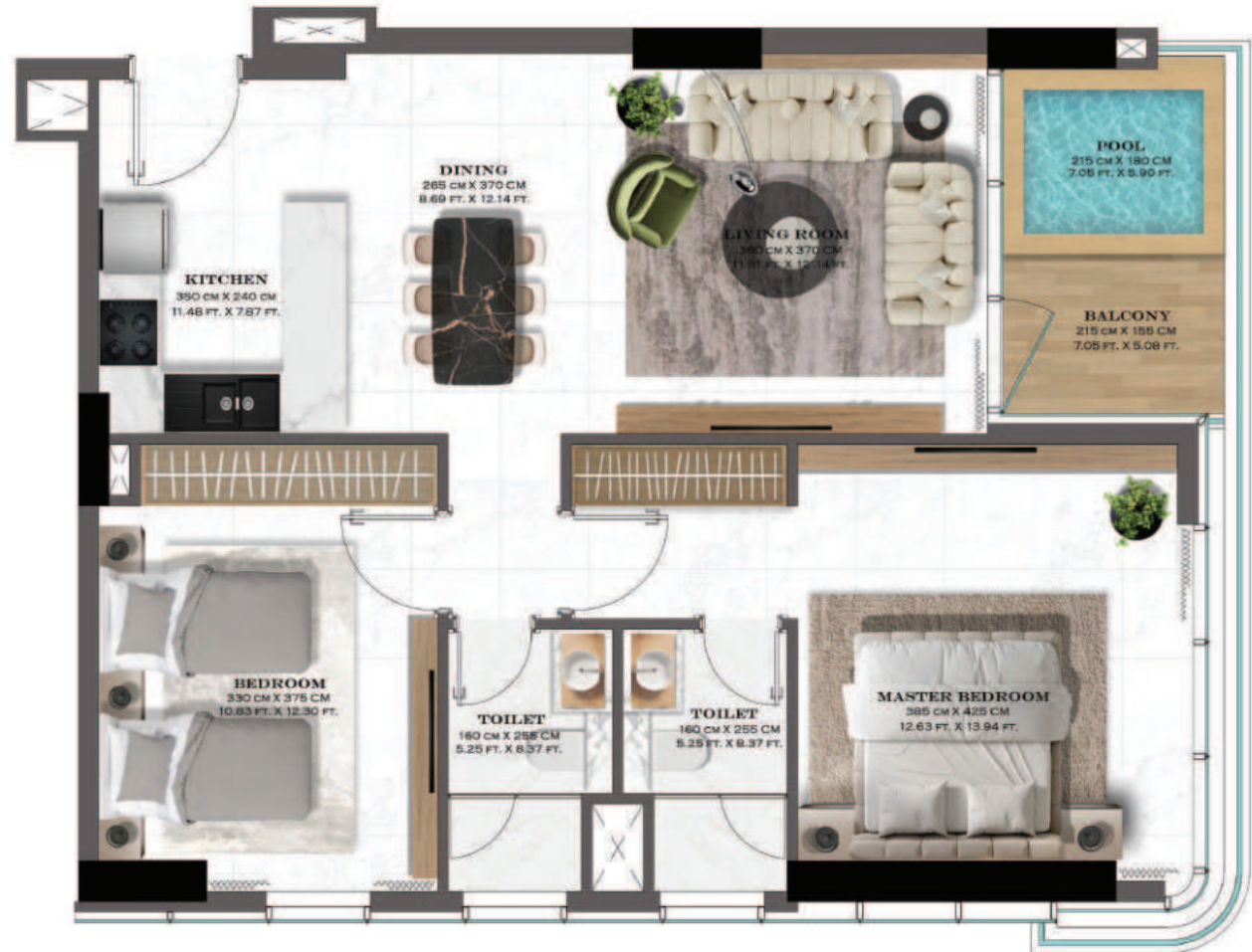
2BHK WITH 1 BALCONY



FIRST FLOOR  
2 TYPICAL UNITS

TYPE 2  
AREA - 88.01 SQM.(947 SQFT.)

NOTE : NORTH DIRECTION IS AS PER THE KEY PLAN



LAZORD  
BY LAPIS





## LAPIS PROPERTIES

### 2BHK WITH 2 BALCONIES



FIRST FLOOR  
2 TYPICAL UNITS

TYPE 1  
AREA - 103.99 SQM.(1119 SQFT.)

NOTE : NORTH DIRECTION IS AS PER THE KEY PLAN

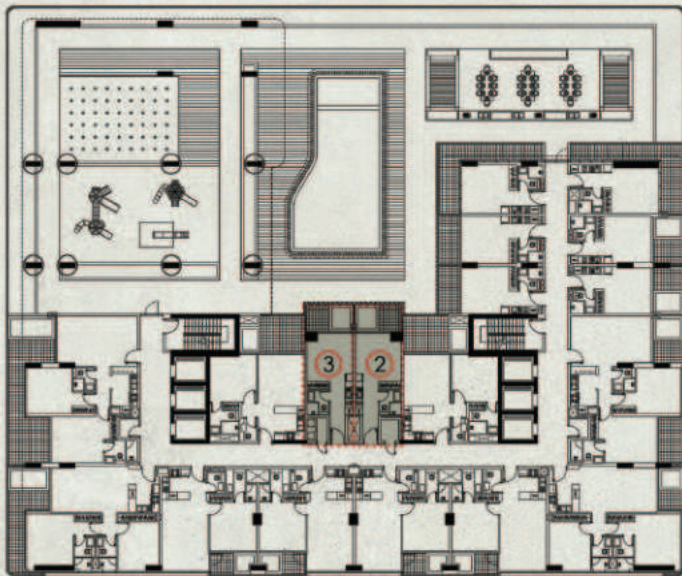


LAZORD  
BY LAPIS





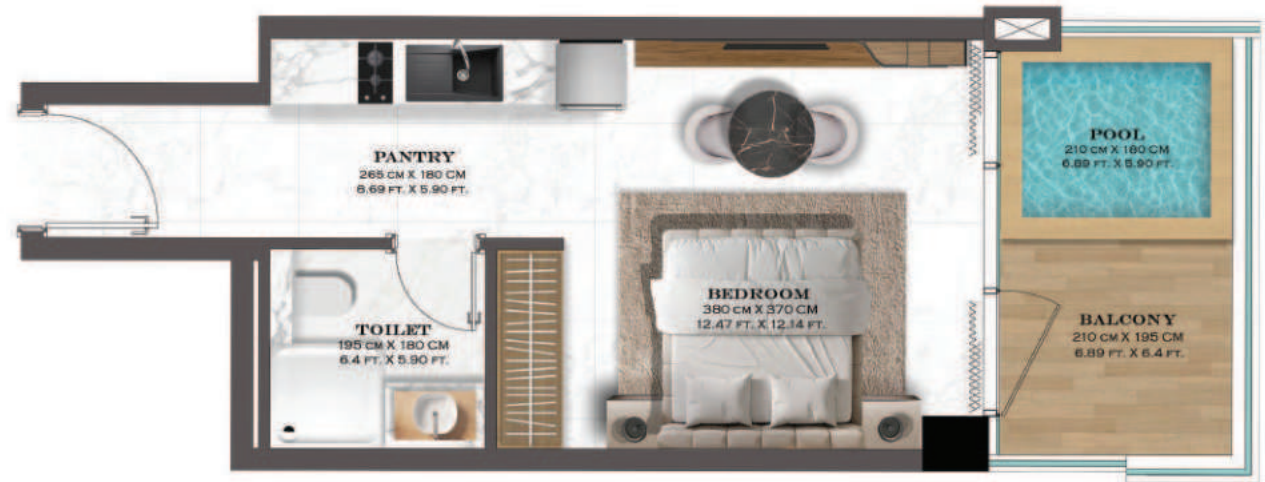
## LAPIS PROPERTIES STUDIO WITH POOL



FIRST FLOOR  
2 TYPICAL UNITS

TYPE 3  
AREA - 36.89 SQM. (397 SQFT.)

NOTE : NORTH DIRECTION IS AS PER THE KEY PLAN



LAZORD  
BY LAPIS





## LAPIS PROPERTIES

### 1 BHK WITH POOL



FIRST FLOOR  
2 TYPICAL UNITS

TYPE 2  
AREA - 67.76 SQM. (729 SQFT.)

NOTE : NORTH DIRECTION IS AS PER THE KEY PLAN



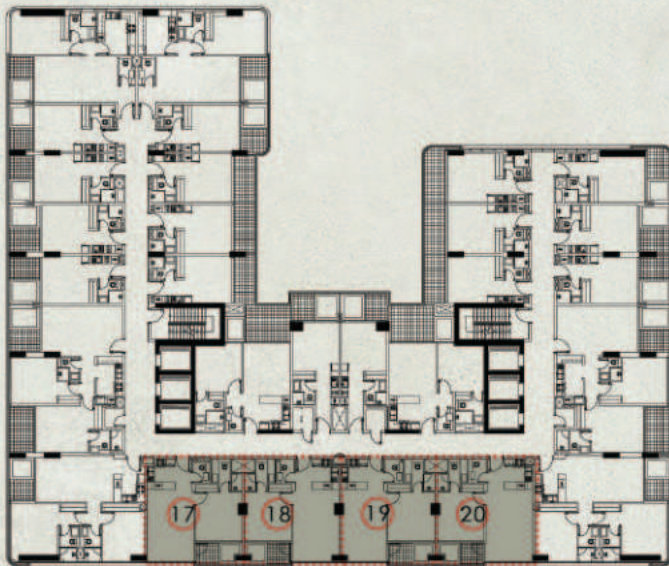
LAZORD  
BY LAPIS





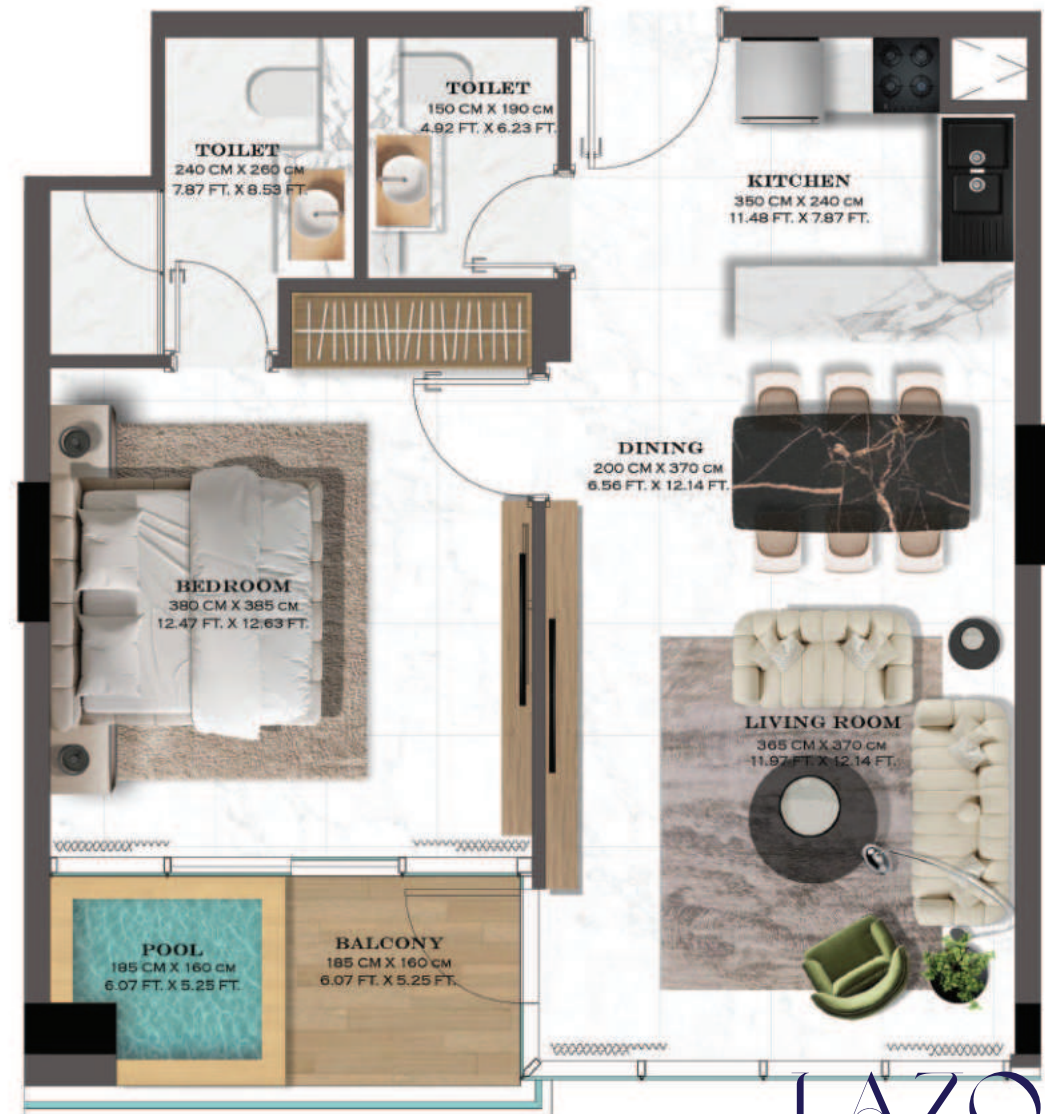
## LAPIS PROPERTIES

### 1BHK WITH POOL



3RD - 9TH FLOOR | TYPE 2  
4 TYPICAL UNITS | AREA - 62.46 SQM. (672 SQFT.)

NOTE : NORTH DIRECTION IS AS PER THE KEY PLAN

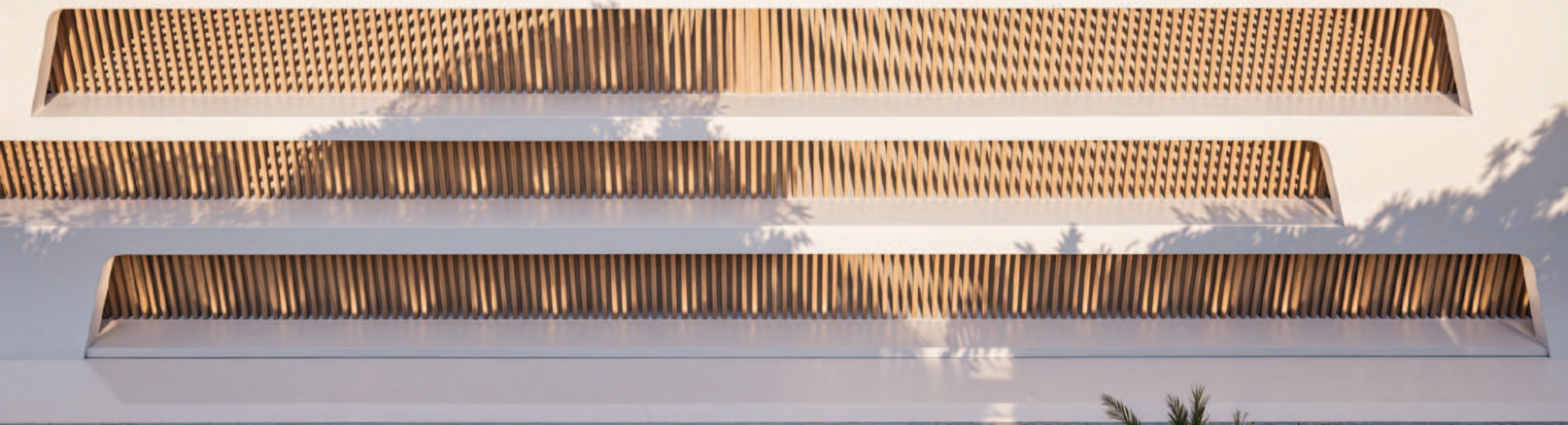


**LAZORD**  
BY LAPIS

















THERE  
IS  
NO  
FINISH  
LINE









# LAZORD

BY LAPIS

-  20 minutes to Burj Khalifa
-  20 minutes to Dubai Mall
-  20 minutes to Dubai Airport
-  20 minutes to Palm Jumeirah
-  20 minutes to Marina
-  5 minutes to Global Village







LAZORD

— BY LAPIS —